



# Company Profile

## SMART CODING NETWORK SERVICES



Call us   
0112389995

<https://scs-sa.com> |

[info@scs-sa.com](mailto:info@scs-sa.com)

Copyright © 2024

# Table Of Content



About Us

Welcome Message

Vision & Mission & Goals

We Work Smart

how do we work ?

Our team

Systems & Solutions

Strategic Business Partners

Active Part:By Cisco / Meraki / HP / Huawei

Network Design & Implementation

Network Security is the Key Priority

UPS Part : APC / Schneider, Centiel and Riello

Fire Alarm System

CCTV System

Audio Video

Smart Automation

Access Control System

Visitor Management System

PA & Sound System

BMS System

Medium Voltage Part

Substations Part

Transformers Part

MDB,MCC & ATS

GENSET Part

Lighting Part

Cables & Wires Part

Wiring Devices Part

Cable Tray & Ladder Part

Conduits & Boxes Part

Grounding & Lightning Part

Conduits & Boxes Part

Contact US



# About Us

The origin of Smart Coding Network Services (SCS) dates back to 2008 when The ITI was established and later expanded to form of SCS. The purpose of establish SCS is to provide innovative business based on best solutions and systems with very high-quality services. Our ultimate objective is to meet the needs of our clients. SCS is one of the leader companies in the field of electrical systems , Information technology and communication in addition to traditional low current ,security and smart systems.

SCS is committed to achieving technology efficiency and business profitability to the clients at their satisfactions and keep all of them happy all the time. SCS is accomplished through constant innovation, holistic solutions delivery, and exceptional delivery, exceptional user support and service after sale for all product & Tocology lines.

We are Certified By :



هيئة المحتوى المحلي  
والمشتريات الحكومية  
Local Content & Government  
Procurement Authority



SCA  
الهيئة السعودية للمقاولين  
Saudi Contractors Authority

جدير

منشآت  
monsha'at  
شركة إدارة المنشآت العمرانية  
Saudi Real Estate Services Authority

الملك عبدالعزيز بن سعود آل سعود  
الهيئة العليا للأمن الصناعي

وزارة الشؤون البلدية  
والقروية والإسكان  
Ministry of Municipal Rural Affairs & Housing







# Welcome Message

At Smart Coding, we take pride in delivering the latest and best services in the field of information technology. We would like to thank you for your continued trust in us and assure you that we will continue to provide services to the highest standards of quality and professionalism.

At Smart Coding, we understand that technological advancements are moving at a rapid pace and that innovation plays a crucial role in achieving success. Therefore, we always strive to stay at the forefront of modern technologies and offer you the latest technical solutions that meet your needs and exceed your expectations.

Our dedicated team works diligently to ensure that your needs are met efficiently and seamlessly. We are here to help you achieve your goals and develop your business by providing customized solutions that suit your individual requirements.

Whether you need advanced application development, innovative website design, or cloud computing solutions, we are here to meet those needs and exceed your expectations.

We value your trust in us, and we promise to continue providing the best services and make every effort to ensure your complete satisfaction.

Thank you for choosing Smart Coding.

A handwritten signature in black ink that reads 'Ibrahim Hroub'. The signature is fluid and cursive.

**Ibrahim Hroub**

CEO - Smart Coding Network Service



# Vision & Mission & Goals

## Vision

To create innovative solutions to help companies, institution and individuals

## Mission

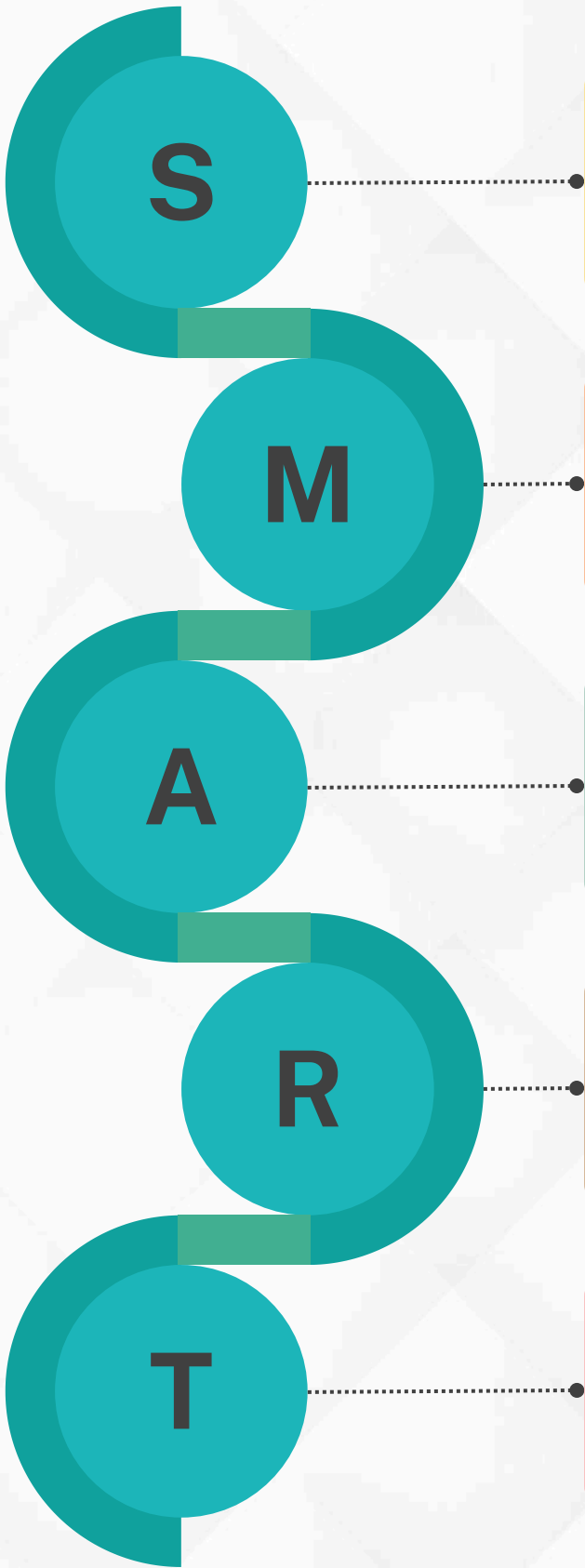
To lead and provide the best solutions and services through technology in various sectors.

## Goals

- Expand our solutions in the region and reach more people
- Enhance our services to face and thrive in a competitive market .
- Advance to be up with Vision 2030 of Saudi Arabia



# We Work Smart



**SPECIFIC**  
Our solutions are tailored precisely to meet the unique needs of our clients, ensuring optimal functionality.

**MEASURABLE**  
We provide clear metrics and performance indicators to track the effectiveness and success of our solutions.

**ACHIEVABLE**  
Our team's expertise and dedication make even the most complex projects achievable with precision and efficiency.

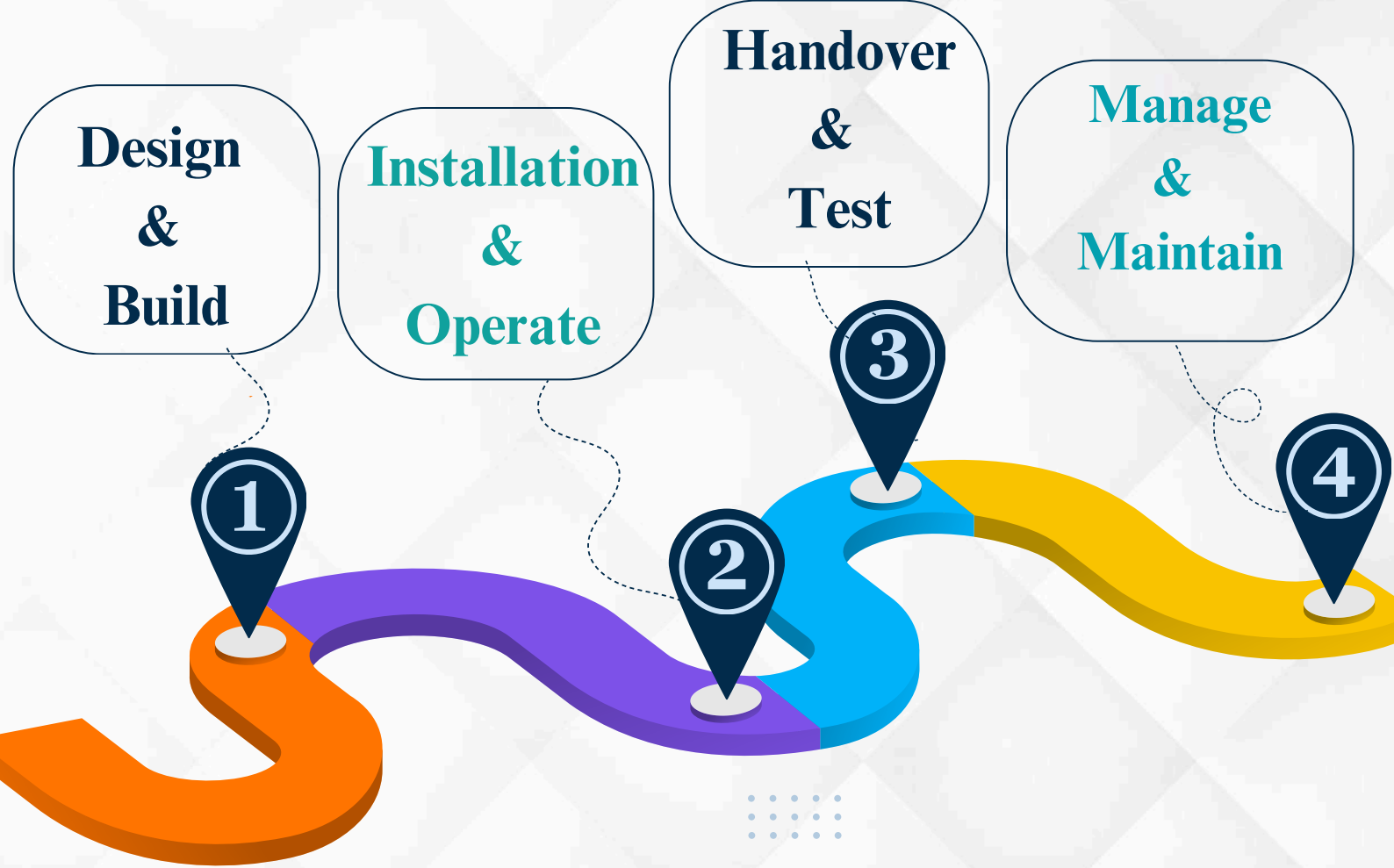
**RELEVANT**  
Our solutions are strategically designed to enhance safety, efficiency, and productivity, addressing the evolving needs of modern businesses.

**TIME-BASED**  
With swift implementation and timely delivery, we ensure that our solutions are not just effective, but also delivered when you need them most.



# how do we work ?

We design, build, Install ,operate and maintain a very high-quality Electrical Systems ,Smart Automation , low current & Security systems in very short time.





# Our team



- 1 ENGINEERS
- 2 TECHNICIANS
- 3 SPECIALISTS
- 4 APPLICATION CONSULTANTS





# Products & Services

- **Security**

- **Fire Alarm , Fire Fighting & Suppression Systems**

- **Automation**

- **ELV**

- **Communications**

- **Power**

# Security



**CCTV**



**Access Control system**



**Gate barrier**



**Cyber security system**



**Advanced video analytics solutions**



**Road Blockers**



**X-RAY**



**VMS and PSIM**



# Fire alarm , Fire Fighting & Suppression Systems



**Fire alarm Systems**



**Water Base Systems**



**Foam base Systems**



**Gas Suppression Systems ( FM200-  
NOVEC1230-Co2-IG )**



**Fire fighting trucks**



**Safety and rescue equipment**

# Automation



**Smart Automation Solutions**



**BMS System**

# ELV



**Data Centre**



**Network Solutions**



**Systems with turnkey data infrastructure**



**Wired and Wireless transmission**



**Audio/Video solutions**



**Video wall**



**Video Conference & collaboration**



# ELV



**IP Public Address**



**IP TV**



**Master Clock system**



**Nurse call system**



**Hologram**

# Communications



**All range of wireless & Microwave solutions**



**Telephony and VOIP**



**Microwave**



**Tetra system**



# Power



**MV&LV Power**



**RMUs**



**Substations & Transformers**



**Power Engineering & Industrial services**



**Solar power system**



**Lighting**



**Power For Mech**



**Genset**



# Power



**UPS**



**MDBs & ATS**



**Panel Boards**



**Cables & wires**



**Switches & sockets**



**Cable Trays ,Conduits & Boxes**



**Roads & Landscape lighting**



**Lightning & Grounding**

# Strategic Business Partners



Microsoft



VICON

AVIGILON™

*HIKVISION*®



LG



 MARCH®  
networks



EATON

  
Cyberoam®

  
COOPER

AVAYA



 Simplex



# Strategic Business Partners

**APC**<sup>®</sup>

by Schneider Electric



النفار  
**alfanar**  
Energy



  
**NIVISS**<sup>®</sup>

  
**legrand**<sup>®</sup>



**Panasonic**



furse 

Schneider  
 Electric



**SLC**  
لإنارة السعودية  
Saudi Lighting  
Since 1978



**Adler**



SEAGATE

**ABB**

# SOME OF OUR CLIENTS



القوات الخاصة للأمن البيئي  
SPECIAL FORCES FOR ENVIRONMENTAL SECURITY



Wesley Clover  
FOUNDATION



solutions  
by stc



kalaam telecom  
Connecting your business is our business

stc



فيفيان بارك  
للأجنحة الفندقية  
★★★★☆



LANDMARK  
GROUP

TOP FRP

Pisano

SOLINK

centrepont



الهيئة العامة للترفيه  
General Entertainment Authority



الإدارة العامة للاتصالات والأنظمة الأمنية  
General Directorate of Communications & Security Systems

max



# Active Part:By Cisco /Meraki / HP / Huawei

## Network Specifications with Cisco Meraki products:

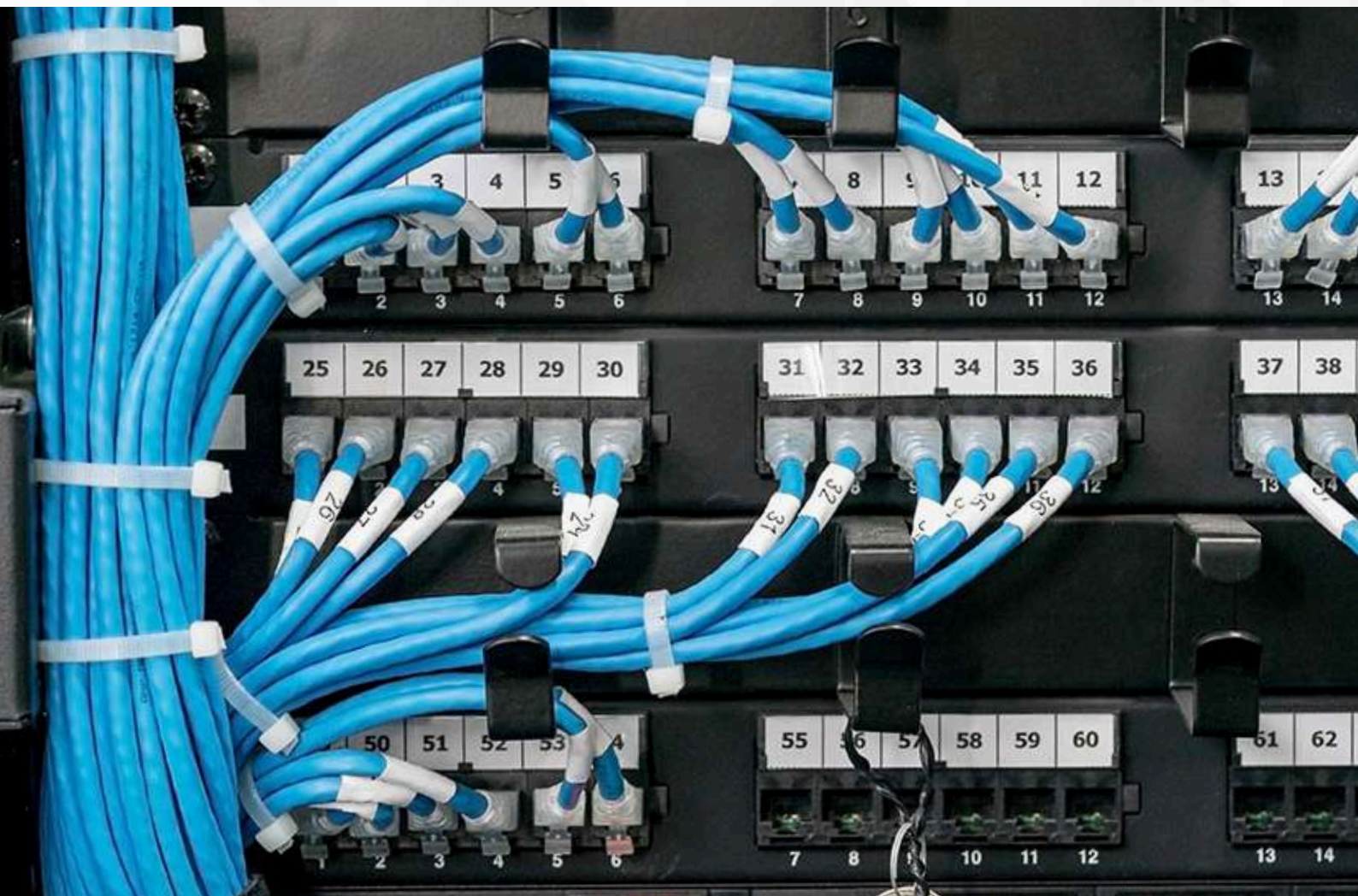
- High availability.
- High speed.
- High redundancy.
- Complete and Full Solution.
- Manageable and controlled solution.



# Network Design & Implementation

## Network Design that delivers Increased Reliability and Productivity

- The Solution Architects in our Project Services division specialize in Network Design and implementation. Our specialist team doing their best to achieve a network with:
- High availability.
- High speed.
- High redundancy.
- Appropriate Data Sovereignty.
- Low Cost relative to other solutions.





# Network Security is the Key Priority

every network has to be built with multiple paths back to clean data in case of corruption.

Despite our rigorous approach to network security, we operate from the standpoint that a security failure is inevitable. So our networks are designed to permit ultra-short Recovery Point Objectives (how recent the data that you restore is) and Recovery Time Objectives (the amount of time before a recovery is performed).

With this mindset, the impact of the weakest part of any IT system – the human element which cannot be fully controlled – is mitigated.





# UPS Part : APC / Schneider, Centiel and Riello

The proposed UPS system is provided a very high power availability and management for entry-level to high-performance servers, storage and networking systems.

We have proposed a Smart which provides high density, true double-conversion on-line power protection for servers, voice / data networks in order to keep you always online and active.





# CCTV System

## The Proposed CCTV System based on the followings:

- High definition IP Camera Surveillance System.
- High performance images sensor Provides high definition. video decoding and playing rate control IP.
- Advance Recording and video management Systems.
- Crystal clear HD images to enforce your security.
- Motion Detection System.
- Smart and Video analytics features.
- High capacity Storage system.
- Integrate with other systems.
- Integrate with other systems.
- Low Cost relative to other solutions.





# Audio / Video

## Conference Rooms & Systems:

- **STUDIO-QUALITY VIDEO:** With an Ultra-HD imaging system, Rally delivers brilliantly sharp video, outstanding Color, and exceptional optical accuracy at resolutions up to 4K. Logitech RightLight™ technology optimizes light balance to emphasize faces and render natural-looking skin tones, even in dim or backlit conditions.
- **SMART CABLING AND CONTENT SHARING:** With a Display Hub and Table Hub to keep cables neat and organized, Rally components and the meeting computer remain securely out of sight. Connected by a single CAT6A cable, both hubs feature a full complement of connections so you can locate the meeting computer near the display or at the table.



# Smart Automation

**Smart Automation System: Zennio ,Schneider, Philips V-mar**

**SCS is proposed a full Smart Automation solution which cover the following Systems and items:**

- Lighting Control.
- Curtains and Shutters.
- Smart Glass.
- Touch Screen.
- Temperature and Air Condition Control.
- Control & Monitor Pumps, Fans ,etc ....



Smart System Can be easily controlled by the user using PC, Laptop, tablets and Mobile ( iOS & Android.





# Access Control System

- Pre-announcement of visitors.
- Visitor enrolment with integrated document scanners.
- Capturing visitors photo and/or signature.
- Tracking and tracing of visitors movements.
- Printing Presence list.
- Assigning visitors to dedicated security level
- Unlimited number of free fields.
- Automatic badge withdrawal.
- Violations and Blacklist management.
- Assigning visitors to approval person.
- Complete reporting functionality.



# Visitor Management System

A Visitor Management System is a digital tool designed to streamline the process of tracking and managing visitors in various environments such as offices, schools, and events. It typically involves features like visitor registration, badge printing, and check-in/check-out procedures. These systems enhance security, improve efficiency, and provide valuable insights into visitor traffic.



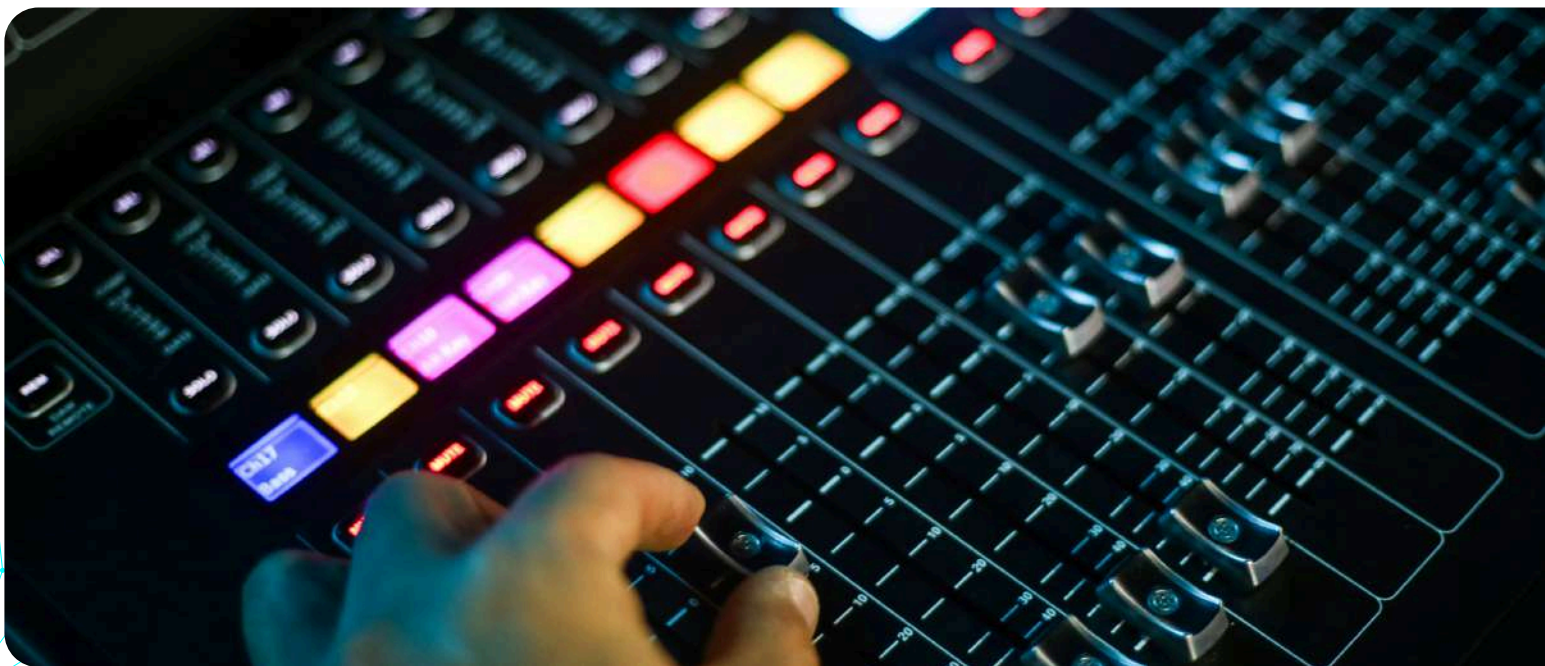


# PA & Sound System

In this Project we have proposed the best items to be work together in order to get the best quality and best prices.



**BOSE**





# BMS System

AUTOMATION DIVISION is part of SCS , which includes automation solutions, smart and latest technologies, BMS systems, Networks and telecommunications, also include Electro-Mechanical for contracting, piping specialized work, maintenance, production lines upgrading. SCS provides solutions of automation controlling and monitoring SCADA systems for various fields like industrials, buildings, power plants, treatment plants, farms, production centers, and more with latest intelligent electronics and control equipment's and devices and latest software with powerful systems and interfaces. Our success is based on our ability to accurately identify and respond to customers' needs rather than twisting the needs to match available products. Taking advantage of the technology offerings to provide customers with what's best for the application and with the security of knowing that it's going to be reliable and extensible.



# Medium Voltage Part

## RMU & Switch Gear Design & Implementation

•By Schneider, ABB, Siemens,Alfanar and Lossy

***RMU & Switch Gears are one of the main parts for any project that make the availability to distribute & connect medium voltage network ,then you can easily feed power for your project***

Our Professional team can estimate, design and build an optimum solutions considering :

- suitable switchgear range for voltages from 3.3kV through to 36kV, utilizing vacuum or SF6 gas circuit breaker technologies. Applications range from simple transformer feeders to complex switchboards .
- Apply SEC standards and Codes.
- Supply reliable energy and protect electrical equipment in secondary distribution network.
- The best solution for indoor/outdoor distribution.
- Suitable for various network applications such as transformer substations ,industrial zones.
- Improve energy availability & saving.
- Optimize network performance.



# Substations Part

## Substations Design & Implementation

### •By Alfano, UTEC and Ericson

We offer a wide range of package substations that are designed to efficiently distribute electrical power from the power station to the consumer. They are suitable for a wide range of commercial and industrial applications that get:

- High availability.
- Wide range Rated Power & Voltages as per standards.
- High quality.
- Low Cost.
- SEC standards & International Codes.





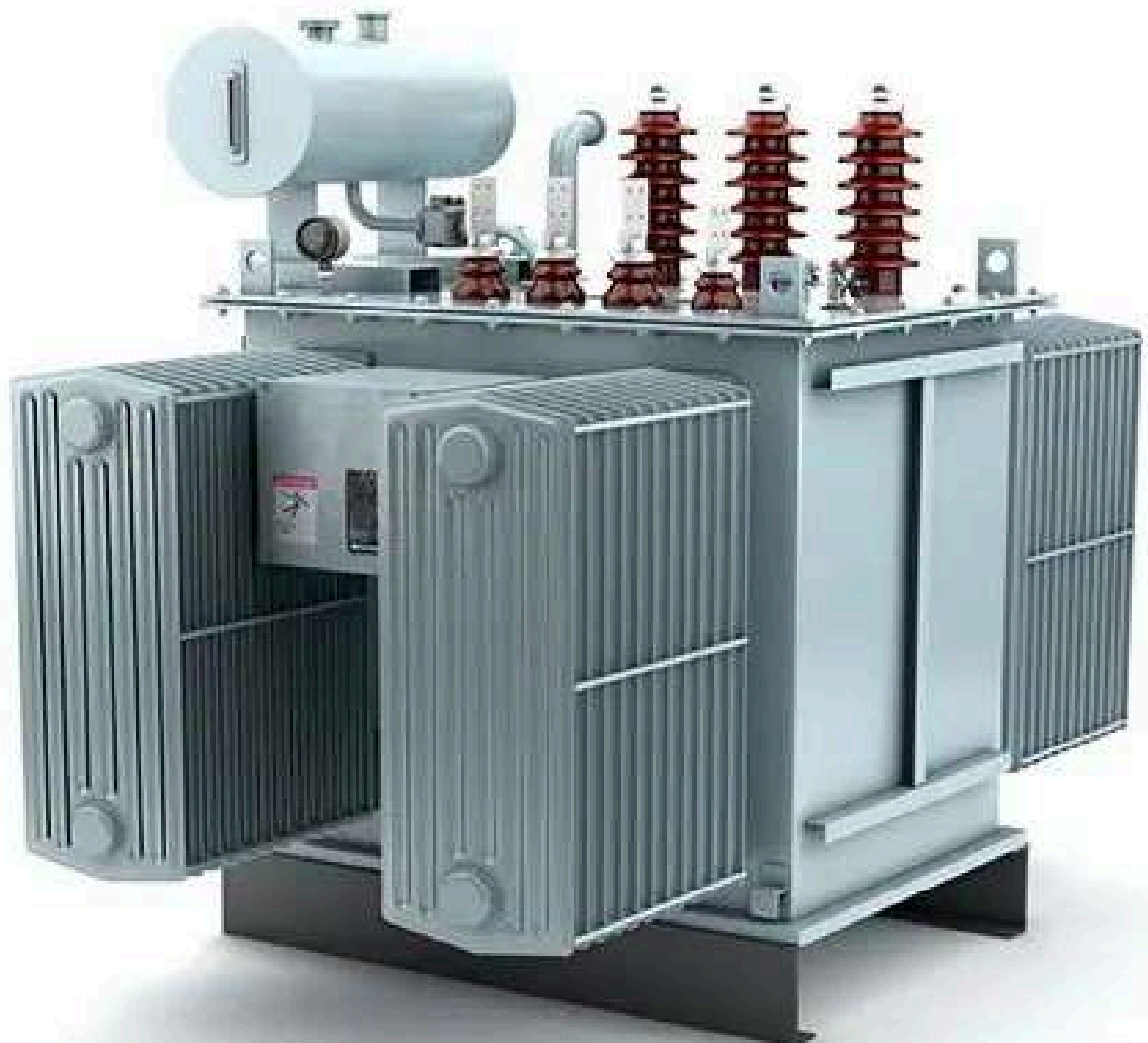
# Transformers Part

## Dry Type & Oil Immersed Transformers

•By Alfamar, ABB, UTEC and Ericson

•Wide range of dry-type transformers with different voltage levels and power ratings. Their low flammability feature makes them an ideal solution for hospitals, shopping centers, and high-occupancy buildings.

•three-phase oil-immersed distribution transformers feature different voltages and power for various ratings. These highly efficient and reliable transformers provide the required electrical power supply without breakage or interruption.



# MDB, MCC & ATS

## Main Distribution Panels ,Motor Control Centers & Auto Transfer Switch Design & Implementation

### By Schneider, ABB and Alfamar Panel Builders

We can provide a wide range of these items considering :

- SEC & Codes Standards.
- Type tested or local assemblies .
- Rated operating voltage.
- Protection standard up to IP-54, IP-55.
- Construction in form 2,3 or 4 .
- Fixed or fully withdraw able design.
- Sheet steel thickness: 1.5 mm or 2.0 mm.
- Maximum safety and reliability.
- Adequate spacing for incoming and outgoing cables.
- Intelligent motor control and switchgear systems.
- Custom control panel using variable frequency drives.
- Soft starters and programmable logic controllers.
- Custom design according to client requirements.



# GENSET Part

## Generators Design & Implementation

•By CUMMINS, CATERPILLAR and PERKINS ...

Operations within every application and industry rely on generators. You can depend on IT to provide robust, flexible, and fully integrated power on demand or full-time. in a global economy where the power is always on, 24/7.

Reliable power for your work, home, and life. Find your use case among everywhere reliable power is needed, from hospitals and data centers to drilling and mining operations.

Generators by application

- Home Standby Generators
- Portable Generators
- Standby Power
- Prime Power
- Commercial Mobile Generators

our specialist team doing their best to achieve the target for project with:

- High availability.
- Accurate estimation .
- Covers code and standards requirements
- Provide the suitable solution considering site needs





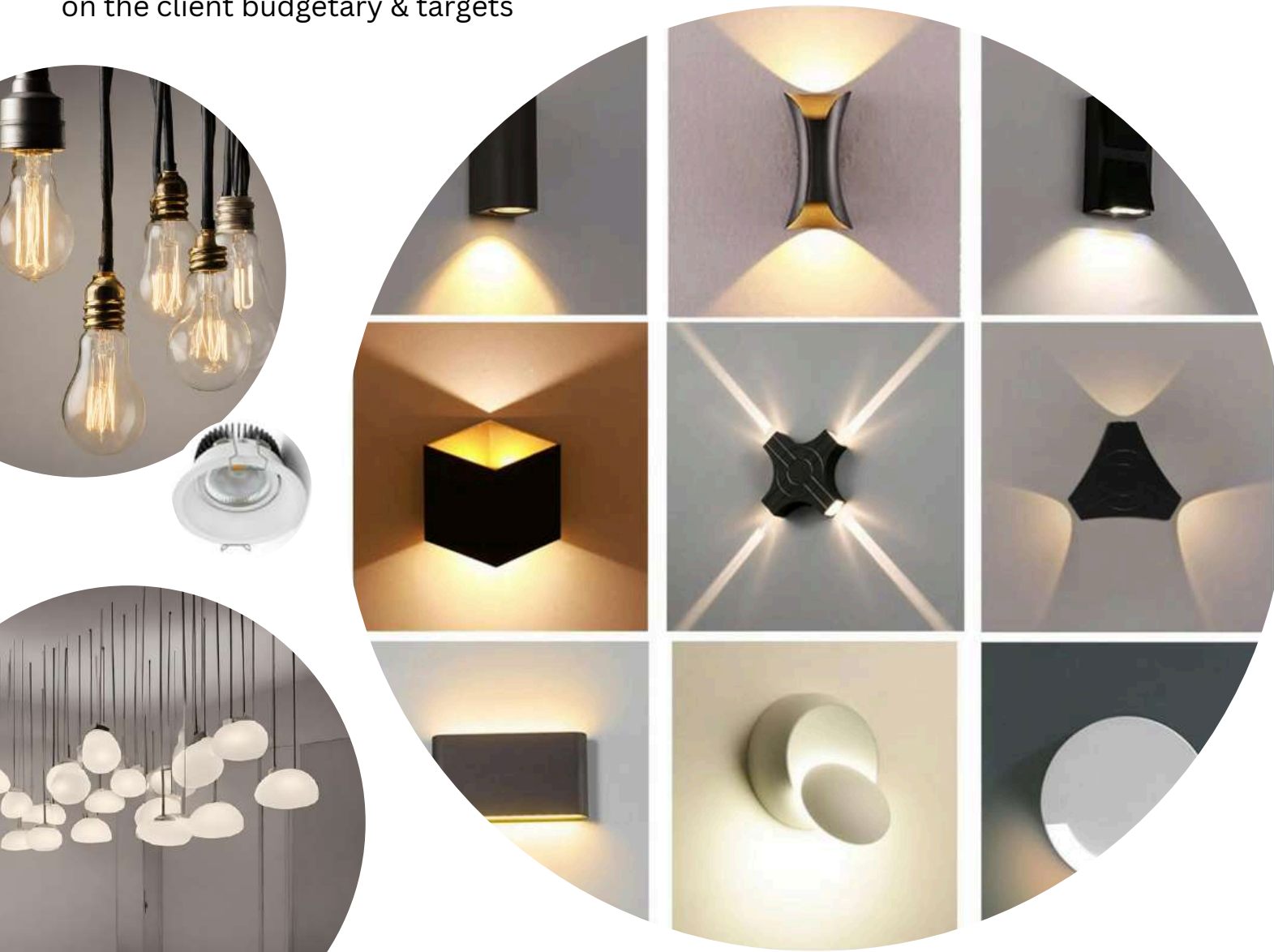
# Lighting Part

## Complete Lighting system

SCS supply and apply a wide variety of lighting, our team make design, lux study, select the suitable type of lighting units, keeping in mind:

- Standards and codes
- Nature of areas, commercial, residential & others
- Power consumption
- Optimum views
- Economical wise
- All Decorative, Direct and indirect lights, spot, linear, hidden, wall & uplights
- Indoor, outdoor, façade, roads & landscape lighting applications
- Lighting colour selection
- Calculations

In addition, we can supply normal, medium & high quality lighting brands depends on the client budgetary & targets



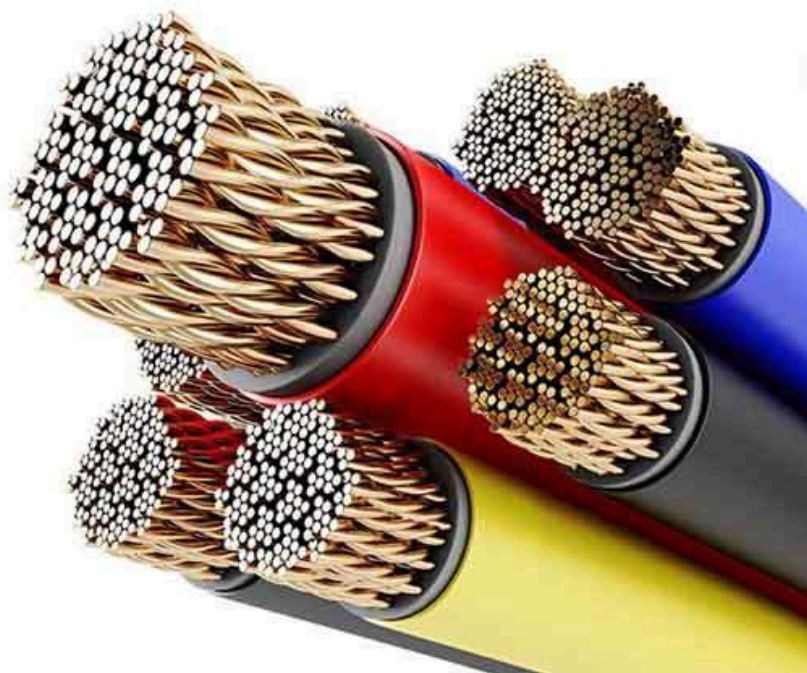
# Cables & Wires Part

## Cables & Wires Design & Implementation

•Riyadh, Alfanar, Jeddah, Bahra and Mesc .....

•With significant experience in Services,SCS provide professional solutions for feeding MV &LV networks , high-quality electrical wires and cables, ranging from low voltage building wires to medium and high voltage power cables considering :

- Cables & wires Size selection
- Comply with codes ,standards & specifications
- High quality & low cost
- Voltage drop & short circuit calculations
- All ways of executions for cables & wires
- extending with Complete accessories



# Wiring Devices Part

## Switches & sockets Design & Implementation

•By Legrend, Gira ,Vimar, MK, Alfancar and Ultra Light

From switches to sockets, wall plates to lighting controls, SCS provides the most complete line of residential, commercial and industrial wiring devices and accessories in the world. All with innovation and intelligence designed in from the start. SCS supply a comprehensive range of wiring accessories that are:

- guarantee
- quality
- flexibility
- safety and performance
- practical features
- save time and energy.
- High availability.





# Cable Tray & Ladder Part

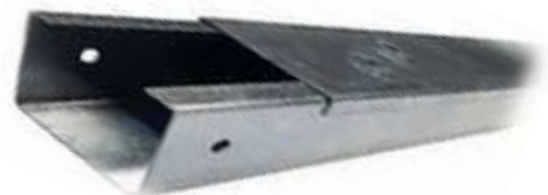
## Cable Tray & Ladder System Design & Implementation

•By RFPB, Alfareed and Midco

SCS offers a comprehensive range of components forming the elements of a complete cable management system. The system offered comprises: Cable trays and cable ladders, Metal channel cable supports, Steel surface trunking. SCS offers range of cable management products in a variety of materials and finishes to suit the environmental conditions where components will be installed

Designers consider

- Pre Galvanised, Hot Dip Galvanized, Stainless Steel & Powder Coated
- Load applied to the system
- Save loading and deflection
- Locations for supports & connections



# Grounding & Lightning Part

## Grounding & Lightning Design & Implementation

### •By Furse & Wallis

SCS offers you a complete efficient system for grounding & lightning. we are proud to offer full system implementation services, This includes:

- Managed Systems Installation
- Installation Supervision
- Complete Turn-Key Installations
- Training

All of our installers are qualified to work safely and are qualified to work in a wide variety of industries and environments. Our installation team is experienced and capable in grounding & lightning system application .



# Conduits & Boxes Part

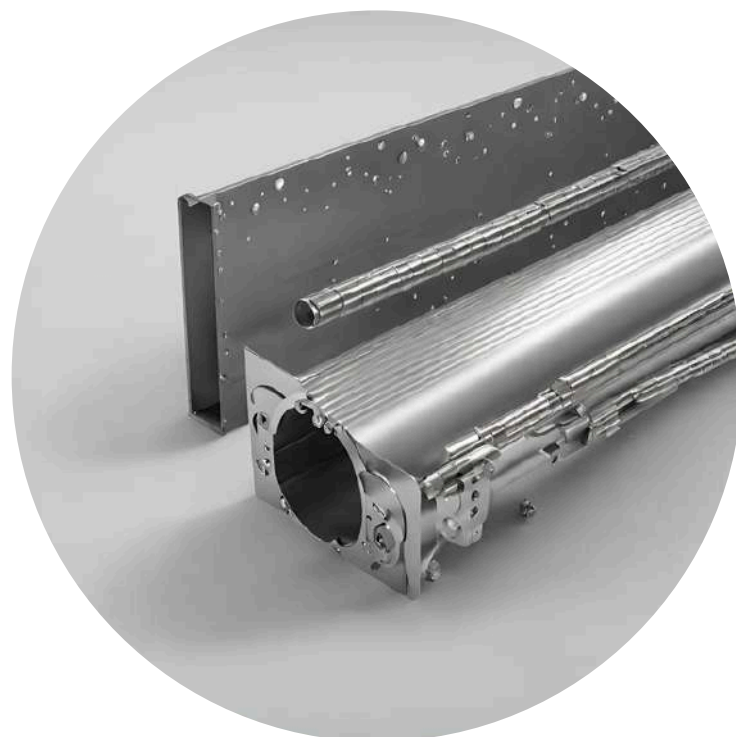
## Conduits & Boxes Design & Implementation

•By Panasonic, ITCC, Ega, MK and Alfannar

SCS provides a different types & sizes of conduits depends on the project specifications ,standards & consultant directions .we can supply ,install & inspect

- Electrical Metallic Tubing (EMT).
- Rigid Metallic Conduits (RMC).
- Unplasticized Polyvinyl Chloride(UPVC).
- polyvinyl chloride(PVC).
- Flexibles Conduits , steel or plastic .

in additional ,we can supply all accessories of installations such as steel boxes ,pvc boxes , fittings & and other related.





# Contact



## HQ Office (Al Riyadh)

 0112389995

 [info@scs-sa.com](mailto:info@scs-sa.com)

 [www.scs-sa.com](http://www.scs-sa.com)

 RAWA2930 - Al Wadi district, north ring road ,SQUARE Building ,1st Floor office 63 & 64, PO Box 245648 Riyadh 11312 KSA.

### Area Key Person

Area	Name	Contact
Western Region	Eng.Dafalla Alhadi Yusuf	+966-556600974 <a href="mailto:d.alhadi@scs-sa.com">d.alhadi@scs-sa.com</a>
Eastern Region	Eng.Majeed Ullah	+966-581746643 <a href="mailto:majeed@scs-sa.com">majeed@scs-sa.com</a>
Northern Region	Eng.Mohannad Ezzaldin	+966-560486180 <a href="mailto:mohannadezz@scs-sa.com">mohannadezz@scs-sa.com</a>
Southern Region	Eng.Tawqeer Ahmad	+966-599811876 <a href="mailto:tawqeer@scs-sa.com">tawqeer@scs-sa.com</a>



**SCS**

**Call us** 

0112389995

<https://scs-sa.com>

|

[info@scs-sa.com](mailto:info@scs-sa.com)

Copyright © 2024